



**Ingrassatori Idraulici con Sfiato**

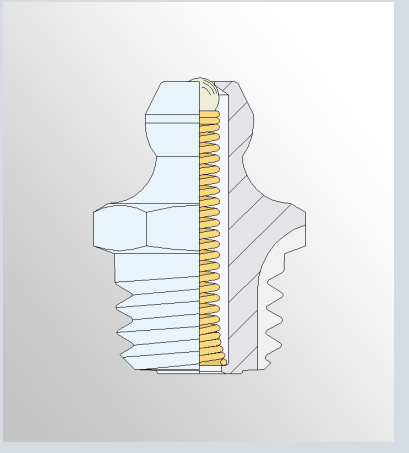


**Hydraulic Grease Nipples with Breather**

Norma UNI 7663 forma A e con filettatura conica 1:16

According to UNI 7663 type A with tapered thread 1:16

<b>1</b>	<p>Acciaio AVP—Zincatura Bianca Fe/Zn 7 II <i>Free Cutting Steel—White Zinc-plated Fe/Zn 7 II</i></p>
<b>2</b>	<p>Acciaio AVP—Carbonitrurazione 650&lt;HV&lt;750 e Zincatura Iridescente Fe/Zn 7 IV <i>Free Cutting Steel—Carbonitriding 650&lt;HV&lt;750 and Iridescent Zinc-plated Fe/Zn 7 IV</i></p>



**INGRASSATORI IDRAULICI HYDRAULIC GREASE NIPPLES**

**Versione Diritta / Straight Version**

*con Sfiato / with Breather*

Disegno <i>Drawing</i>	Fil. <i>Thread</i>	Ch <i>SW</i>	Codice / Code				
			<b>1</b> <i>Acciaio/Steel Fe/Zn 7 II</i>	<b>2</b> <i>Acciaio/Steel C. Fe/Zn 7 IV</i>			
	1/4"-28	7	<i>90.15-SF-ZB</i>	<i>90.15-SF-ICH</i>			
	M6x1	7	<i>90.01-SF-ZB</i>	<i>90.01-SF-ICH</i>			
	M8x1	9	<i>90.03-SF-ZB</i>	<i>90.03-SF-ICH</i>			
	M8x1,25	9	<i>90.04-SF-ZB</i>	<i>90.04-SF-ICH</i>			
	R 1/8	11	<i>90.32-SF-ZB</i>	<i>90.32-SF-ICH</i>			
	M10x1	11	<i>90.25-SF-ZB</i>	<i>90.25-SF-ICH</i>			
	M10x1,25	11	<i>90.27-SF-ZB</i>	<i>90.27-SF-ICH</i>			
	1/8"-27	11	<i>CD610-SF-ZB</i>	<i>CD610-SF-ICH</i>			
	R 1/4	14	<i>90.33-SF-ZB</i>	<i>90.33-SF-ICH</i>			

Codici in corsivo su richiesta soggetti a quantità minime di produzione se non disponibili a magazzino.

*Code ref. written in Italic on demand under minimum production quantity if not available at stock.*

**Versione a 45° / 45° Version**

*con Sfiato / with Breather*

Disegno Drawing	Fil. Thread	Ch SW	Codice / Code					
			1 Acciaio/Steel Fe/Zn 7 II	2 Acciaio/Steel C. Fe/Zn 7 IV	3 Acciaio/Steel Geomet 500A	4 AISI 303/A2	5 AISI 316/A4	6 Ottone/Brass
	R 1/8	11	<i>90.52-SF-ZB</i>	<i>90.52-SF-ICH</i>				
	M10x1	11	<i>90.45-SF-ZB</i>	<i>90.45-SF-ICH</i>				
	M10x1,25	11	<i>90.40-SF-ZB</i>	<i>90.40-SF-ICH</i>				
	M10x1,5	11	<i>90.47-SF-ZB</i>	<i>90.47-SF-ICH</i>				
	R 1/4	14	<i>90.53-SF-ZB</i>	<i>90.53-SF-ICH</i>				

**Versione a 90° / 90° Version**

*con Sfiato / with Breather*

Disegno Drawing	Fil. Thread	Ch SW	Codice / Code					
			1 Acciaio/Steel Fe/Zn 7 II	2 Acciaio/Steel C. Fe/Zn 7 IV	3 Acciaio/Steel Geomet 500A	4 AISI 303/A2	5 AISI 316/A4	6 Ottone/Brass
	R 1/8	11	<i>90.72-SF-ZB</i>	<i>90.72-SF-ICH</i>				
	M10x1	11	<i>90.65-SF-ZB</i>	<i>90.65-SF-ICH</i>				
	M10x1,25	11	<i>90.60-SF-ZB</i>	<i>90.60-SF-ICH</i>				
	M10x1,5	11	<i>90.67-SF-ZB</i>	<i>90.67-SF-ICH</i>				
	R 1/4	14	<i>90.73-SF-ZB</i>	<i>90.73-SF-ICH</i>				