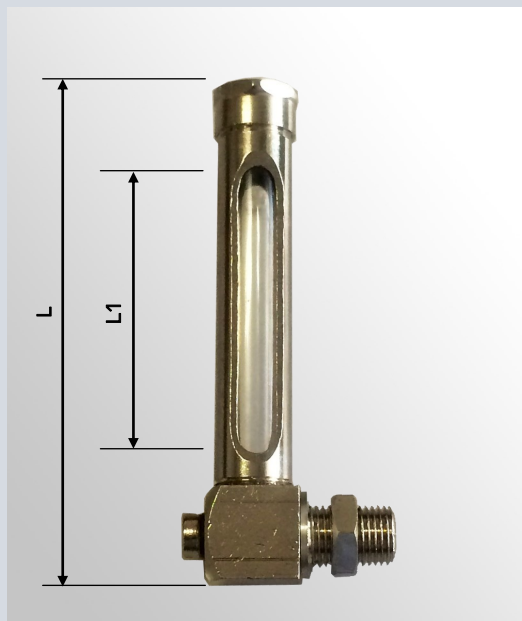


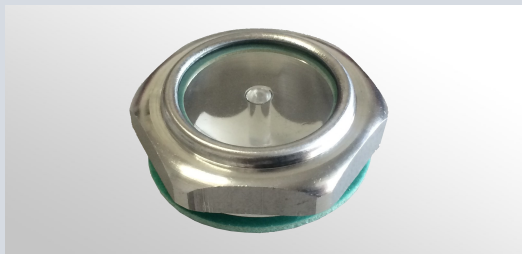
INDICATORI DI LIVELLO
OIL GAUGES



Codice Code ref.	Filettatura Thread	L (mm)	L1 (mm)
86.06-14	G 1/4"	60	23
86.06-38	G 3/8"	60	23
86.08-14	G 1/4"	80	43
86.08-38	G 3/8"	80	43
86.10-14	G 1/4"	100	63
86.10-38	G 3/8"	100	63
86.12-14	G 1/4"	120	78
86.12-38	G 3/8"	120	78
86.15-14	G 1/4"	150	108
86.15-38	G 3/8"	150	108
86.20-14	G 1/4"	200	148
86.20-38	G 3/8"	200	148

Caratteristiche:
Corpo in ottone nichelato, serbatoio in Plexiglass.
Features:
Nickel plated brass body, Plexigum reservoir.

INDICATORI DI LIVELLO A VISTA-Corpo in Alluminio, spia in Plexiglass
VISUAL LEVEL INDICATOR-Body Aluminium made, inspection window Plexiglass made



Codice Code ref.	Chiave [mm] S.W. [mm]	Filettatura Thread
R.247/A	17	1/4"
R.247/B	22	3/8"
R.247/C	27	1/2"
R.247/D	32	3/4"
R.247/E	40	1"

Completo di guarnizione in fibra.
Complete of fiber seal.

TUBI ROMPIGETTO
SPOUT-BREAKER HOSES



Codice Code ref.	Filettatura Thread	Lunghezza (mm) Length (mm)	Øint (mm) I.D. (mm)	Øest (mm) O.D. (mm)
R.211/B-14	1/4"	200	6,0	13,8
R.211/B-38	3/8"	200	6,0	13,8
R.211/B-12 ⁽¹⁾	1/2"	200	6,0	13,8
R.211/D-14	1/4"	300	6,0	13,8
R.211/D-38	3/8"	300	6,0	13,8
R.211/D-12 ⁽¹⁾	1/2"	300	6,0	13,8
R.211/F-14	1/4"	400	6,0	13,8
R.211/F-38	3/8"	400	6,0	13,8
R.211/F-12 ⁽¹⁾	1/2"	400	6,0	13,8
R.211/H-14	1/4"	500	6,0	13,8
R.211/H-38	3/8"	500	6,0	13,8
R.211/H-12 ⁽¹⁾	1/2"	500	6,0	13,8
R.211/L-14	1/4"	600	6,0	13,8
R.211/L-38	3/8"	600	6,0	13,8
R.211/L-12 ⁽¹⁾	1/2"	600	6,0	13,8
R.211/N-14	1/4"	700	6,0	13,8
R.211/N-38	3/8"	700	6,0	13,8
R.211/N-12 ⁽¹⁾	1/2"	700	6,0	13,8

Caratteristiche:
Seminrigidi, cromati per acqua e olio.
Features:
Semi-rigid, Chrome-plated, for water & oil.

⁽¹⁾ Con riduzione a parte
⁽²⁾ Adaptor separated