



## Testine Ingrassatrici

Adatte per ingrassatori manuali, elettrici, pneumatici, per siringhe a vite e a pressione. Compatibili con ogni tipo di tubazione rigida o in gomma.



## Couplers for Grease Nipples

Suitable for manual, electrical, pneumatic grease pumps and for screw or pressure greaser guns. Suitable for every kind of rigid or rubber hose.



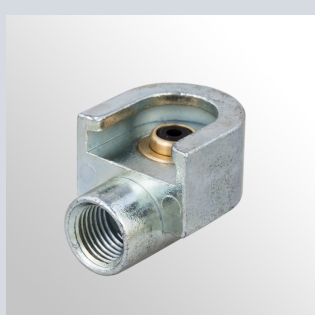
### Testina ZERK-Acciaio Zincato Bianco Fe/Zn 7 II ZERK Coupler-Steel White Zinc Plated Fe/Zn 7 II

Codice Code ref.	Filettatura Thread	Confezione [pz] Package [pcs]	Adatto per Suitable for
80.03-7-8	M10x1	100 standard	Ingrassatori a testa convessa Convex head grease nipples
80.03-7-8-10	M10x1	10 retail	



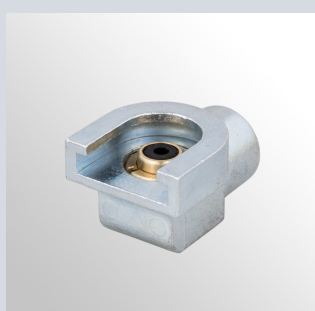
### Testina LUB-Ottone LUB Coupler-Brass

Codice Code ref.	Filettatura Thread	Confezione [pz] Package [pcs]	Adatto per Suitable for
80.13-21	M10x1	100 standard	Ingrassatori a testa concava ns. rif. serie 94.XX Concave head grease nipples our ref. 94.XX
80.13-21-10	M10x1	10 retail	



### Testina Piana a Gancio-Corpo in lega ZAMA Hook-On Connector-Body ZAMAK alloy made

Codice Code ref.	Filettatura Thread	Confezione [pz] Package [pcs]	Adatto per Suitable for
81.53-ZB	M10x1	100 standard	Ingr. a testa piana es.15 da ns. rif. 92.01 a 92.33 e ingrassatori testa piana Ø16 DIN 3404 A Button head grease nipples hex.15 from ref. 92.01 to 92.33 and button head grease nipples Ø16 DIN 3404 A
81.53-10-ZB	M10x1	10 retail	
81.53-01-ZB	M10x1	1 blister	
81.53-G-ZB	1/8" G	100 standard	



### Testina Piana a Spinta-Corpo in lega ZAMA Slide-On Connector-Body ZAMAK alloy made

Codice Code ref.	Filettatura Thread	Confezione [pz] Package [pcs]	Adatto per Suitable for
81.55-ZB	M10x1	100 standard	Ingr. a testa piana es.15 da ns. rif. 92.01 a 92.33 e ingrassatori testa piana Ø16 DIN 3404 A Button head grease nipples hex.15 from ref. 92.01 to 92.33 and button head grease nipples Ø16 DIN 3404 A
81.55-10-ZB	M10x1	10 retail	
81.55-01-ZB	M10x1	1 blister	
81.55-G-ZB	1/8" G	100 standard	



### Testina Piana Gigante-Corpo in lega ZAMA Giant Hook-On Connector-Body ZAMAK alloy made

Codice Code ref.	Filettatura Thread	Confezione [pz] Package [pcs]	Adatto per Suitable for
81.57-ZB	M10x1	50 standard	Ingr. a testa piana es.22 DIN 3404 B da ns. rif. 92.66 a 92.70 Button head grease nipples hex.22 DIN 3404 B from ref. 92.66 to 92.70
81.57-10-ZB	M10x1	10 retail	
81.57-01-ZB	M10x1	1 blister	
81.57-G-ZB	1/8" G	50 standard	





Testine Ingrassatrici



Couplers for Grease Nipples



**Testina Idraulica a 4 Griffe "Excellent"**-Acciaio Zincato Bianco Fe/Zn 7 II  
**Hydraulic Coupler with 4 Jaws "Excellent"**-Steel White Zinc Plated Fe/Zn 7 II

Codice Code ref.	Filettatura Thread	Confezione [pz] Package [pcs]	Adatto per Suitable for
81.75-ZB	M10x1	10 standard	Ingrassatori Idraulici ns. rif. serie 90.XX e serie 70.XX Hydraulic grease nipples ref. 90.XX and 70.XX series



**Testina Idraulica a 4 Griffe "Professional"**-Acciaio Zincato Bianco Fe/Zn 7 II  
**Hydraulic Coupler with 4 Jaws "Professional"**-Steel White Zinc Plated Fe/Zn 7 II

Codice Code ref.	Filettatura Thread	Confezione [pz] Package [pcs]	Adatto per Suitable for
R.129	M10x1	25 standard	Ingrassatori Idraulici ns. rif. serie 90.XX e serie 70.XX Hydraulic grease nipples ref. 90.XX and 70.XX series
R.129-10	M10x1	10 retail	
R.129-01	M10x1	1 blister	



**Testina Idraulica a 4 Griffe a 90°**-Acciaio Zincato Bianco Fe/Zn 7 II  
**Hydraulic Coupler with 4 Jaws 90°**-Steel White Zinc Plated Fe/Zn 7 II

Codice Code ref.	Filettatura Thread	Confezione [pz] Package [pcs]	Adatto per Suitable for
R.101	M10x1	10 standard	Ingrassatori Idraulici ns. rif. serie 90.XX e serie 70.XX Hydraulic grease nipples ref. 90.XX and 70.XX series
R.101-01	M10x1	1 blister	